

Weekly Project Report | Report #20 | Date: June 19, 2017



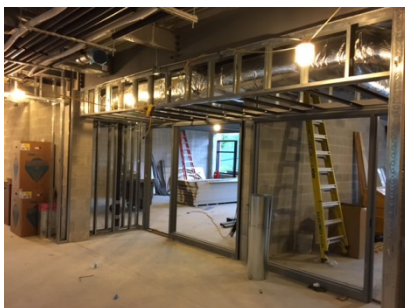
Half Day – Exterior Facebrick, Windows



Half Day – Interior



Sprague – Exterior, North side



Sprague – Interior

Safety Notices for Students and Staff:

- Please be aware of construction-related vehicles entering and exiting the entrance to the Half Day Intermediate School site on the north driveway off of Olde Half Day Road.
- Please be aware of construction-related vehicles entering and exiting the entrance to the Laura B. Sprague School site off of Kings Cross Drive.
- Please do not enter the areas within the fencing. Please do not congregate near the construction site entrances.
- Site access is restricted to contractors and authorized personnel. **Non-Construction Vehicles are not allowed on or through the site.**

Project Safety:

The construction team has worked a total of 112 of 116 Days incident and injury free and without a lost time accident on the project through June 18, 2017.

Week In Review - Week of June 12, 2017

- Level 2 Drywall began at Half Day School.
- Overhead and In-wall MEP work continued on Level 2.
- Exterior Facebrick completed. Exterior Windows and Exterior Framing continued at Half Day School.
- Exterior Facebrick continued and Windows began at Laura B. Sprague School.
- Interior framing continued at Laura B. Sprague School.
- Overhead MEP work continued on Levels 1 and 2 at Laura B. Sprague School.
- Roofing was completed at Laura B. Sprague School.
- Demolition of the renovation area began at both schools on June 10, 2017.

Week Major Activity Look-ahead - Week of June 19, 2017

Half Day School:

- Continue with MEP work on Level 2.
- Continue with Exterior Windows and Exterior Framing systems.
- Continue with Drywall installation.
- Continue with renovations phase and level 2 addition above the main office.
- Build ramp at South.

Laura Sprague School:

- Complete Exterior Facebrick.
- Continue with Framed Partitions and Soffits/Ceilings.
- Continue with MEP/FP overhead and in-wall installations.
- Continue with Exterior Windows.
- Continue with renovations phase.