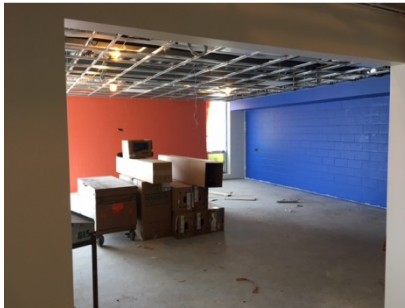


### Weekly Project Report | Report #22 | Date: July 03, 2017



Half Day – Exterior, South Ramp



Half Day – Ceilings/Paint



Sprague – Exterior at North



Sprague – Interior/Renovation Space

#### Safety Notices for Students and Staff:

- Please be aware of construction-related vehicles entering and exiting the entrance to the Half Day Intermediate School site on the north driveway off of Olde Half Day Road.
- Please be aware of construction-related vehicles entering and exiting the entrance to the Laura B. Sprague School site off of Kings Cross Drive.
- Please do not enter the areas within the fencing. Please do not congregate near the construction site entrances.
- Site access is restricted to contractors and authorized personnel. **Non-Construction Vehicles are not allowed on or through the site.**

#### Project Safety:

The construction team has worked a total of 124 of 128 Days incident and injury free and without a lost time accident on the project through July 02, 2017.

#### Week In Review - Week of June 26, 2017

- Drywall complete on Level 2. Painting started on Level 2. Half Day.
- Level 1 first coat painting complete. Ceilings and ceramic tile ongoing. Half Day.
- Rooftop MEP connections ongoing. Testing Levels 1 and 2 ongoing. Half Day.
- Exterior painting ongoing at Half Day.
- Level 2 addition steel was set and slab was poured. Stair infill complete. Half Day.
- Overhead MEP work completed on Level 1 and continued on Level 2 at Sprague.
- Finishing drywall partitions ongoing on Level 1 at Sprague.
- Renovation area MEP overhead and in-wall rough-in and wall framing began at both schools.

#### Week Major Activity Look-ahead - Week of July 03, 2017

##### Half Day School:

- Continue with painting, ceilings, and ceramic tile on Level 1 and painting on 2.
- Begin MEP trim in Level 1 ceiling grid.
- Begin masonry at Level 2 addition.
- Continue with renovations phase overhead and in-wall MEP and wall framing.
- Complete ramp at South.
- Begin MEP systems installation in attic.

##### Laura Sprague School:

- Begin drywall finishing on both levels. Begin painting on Level 1.
- Continue with final MEP/FP overhead installations on Level 2.
- Continue with renovations phase MEP overhead and in-wall rough-in and framing.