

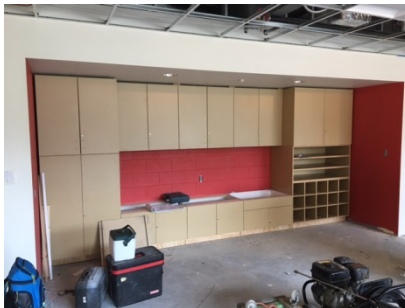
Weekly Project Report | Report #26 | Date: July 31, 2017



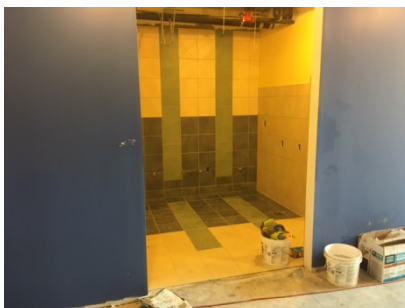
Half Day – Classroom



Half Day – Lockers in progress



Sprague – Classroom Casework in progress



Sprague – Toilet Room Tile in progress

Safety Notices for Students and Staff:

- Please be aware of construction-related vehicles entering and exiting the entrance to the Half Day Intermediate School site on the north driveway off of Olde Half Day Road.
- Please be aware of construction-related vehicles entering and exiting the entrance to the Laura B. Sprague School site off of Kings Cross Drive.
- Please do not enter the areas within the fencing. Please do not congregate near the construction site entrances.
- Site access is restricted to contractors and authorized personnel. **Non-Construction Vehicles are not allowed on or through the site.**

Project Safety:

The construction team has worked a total of 148 of 152 Days incident and injury free and without a lost time accident on the project through July 30, 2017.

Week In Review - Week of July 24, 2017

- Half Day Main Addition: MEP trim, painting, ceramic tile, display boards, and casework continued. Exterior painting nearly complete. Lockers began. Ceilings nearly completed with grid and drywall.
- Half Day Existing Renovation: Continue with MEP rough-in, framing, and drywall. Continue paint and ceilings.
- Half Day Office Addition: Completed roofing and facebrick. Began interior MEP.
- Sprague Main Addition: Continued with painting. Continued ceilings and ceramic tile on both levels. Began display boards and casework. Completed roof edge coping. Ceilings nearly completed with grid and drywall.
- Sprague Existing Renovation: Ceilings and painting continued.

Week Major Activity Look-ahead - Week of July 31, 2017

Half Day School:

- Addition: Continue with MEP trim, painting, ceilings, casework, display boards, ceramic tile, and lockers. Begin classroom flooring.
- Addition Exterior: Continue with exterior painting and doors. Begin sitework.
- 2nd Floor Office Addition: Continue with MEP overhead and in-wall MEP. Set exterior window systems.
- Existing School Renovation: Continue with MEP work, painting, and ceilings.

Laura Sprague School:

- Addition: Continue with painting, ceilings, MEP trim, and ceramic tile on both levels. Continue display boards and casework. Begin lockers.
- Existing School Renovation: Continue with painting, ceilings, and ceiling/wall trim.