

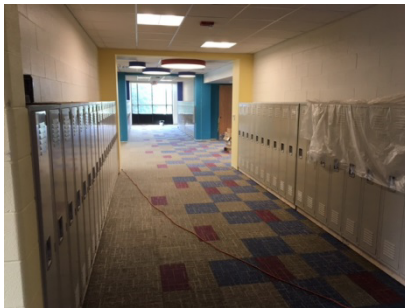
Weekly Project Report | Report #28 | Date: August 14, 2017



Half Day – Classroom



Half Day – Landscaping



Sprague – Corridor



Sprague – Sidewalks

Safety Notices for Students and Staff:

- Please be aware of construction-related vehicles entering and exiting the entrance to the Half Day Intermediate School site on the north driveways off of Olde Half Day Road.
- Please be aware of construction-related vehicles entering and exiting the entrance to the Laura B. Sprague School site off of Kings Cross Drive.
- Please do not enter the areas within the fencing. Please do not congregate near the construction site entrances.
- Site access is restricted to contractors and authorized personnel. **Non-Construction Vehicles are not allowed on or through the site.**

Project Safety:

The construction team has worked a total of 160 of 164 Days incident and injury free and without a lost time accident on the project through August 13th, 2017.

Week In Review - Week of August 7, 2017

- Half Day Main Addition: Completed classroom/corridor flooring and plumbing trim. Finalizing MEP trim, painting, and door hardware. Began landscaping.
- Half Day Existing Renovation: Completed most flooring. Continued with final MEP trim work and painting. Completed casework. Plumbing trim nearing completion. Began wood floor refinishing on level 2. Passed sprinkler test.
- Half Day 2nd Floor Office Addition: Began painting and installed ceiling grid.
- Sprague Main Addition: Completed classroom flooring. Began elevator. Completed plumbing trim. Completed sidewalks. Completed casework.
- Sprague Existing Renovation: Completed ceilings. Began flooring. Final painting.

Major Activity Look-ahead - Week of August 14, 2017

Half Day School:

- Addition: Complete fire alarm test. Complete lockers, stair rails and stair flooring. Complete all MEP trim and begin touch-up painting. Perform fire alarm test.
- Exterior: Complete landscaping. Pave new parking lot..
- 2nd Floor Office Addition: Complete painting and final overhead MEP.
- Existing School Renovation: Complete flooring and final MEP trim. Complete painting. Perform fire alarm test. Collaboration area lockers and flooring.

Laura Sprague School:

- Addition: Complete elevator, corridor flooring, stair rails, and begin stair flooring. Complete MEP trim, lockers, and final painting. Complete landscaping. Perform fire alarm test.
- Existing School Renovation: Complete flooring, final wall trim, and final painting.